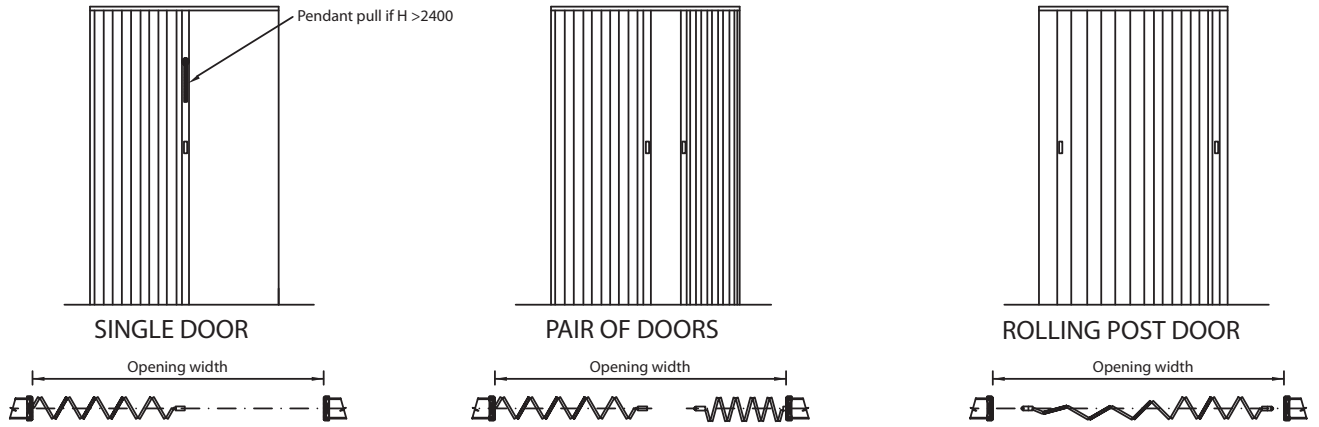


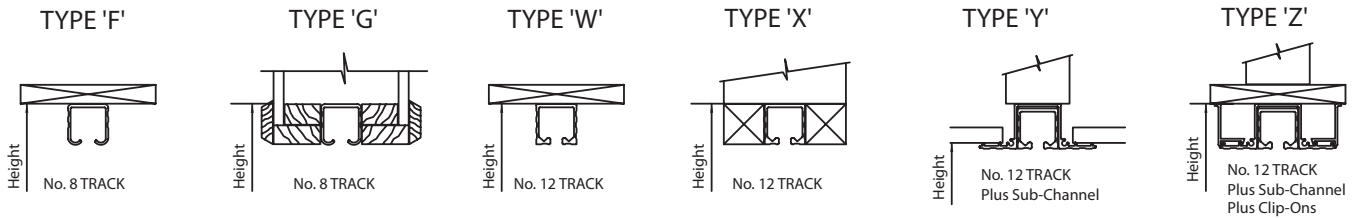


woodfold
foldingdoors

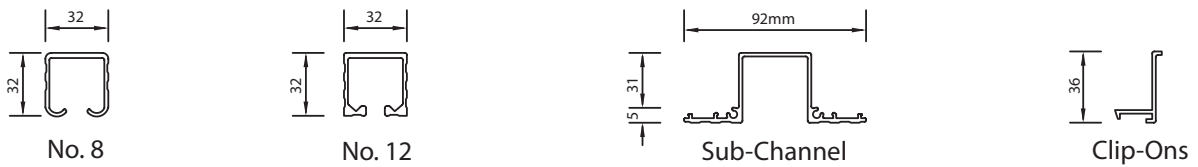
TYPICAL ELEVATIONS



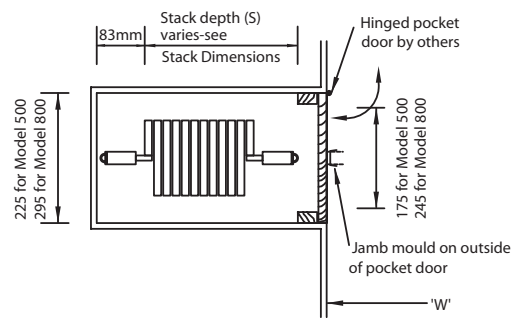
TRACK INSTALLATION OPTIONS



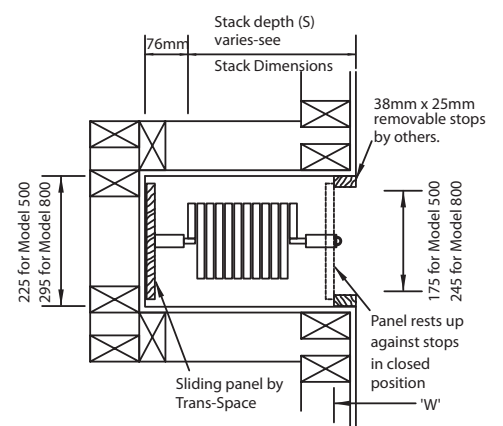
TRACK DIMENSIONS



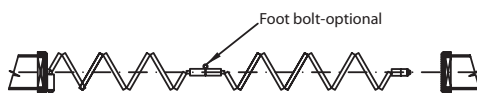
TYPICAL SECTION DETAILS



Rolling Post Door In Pocket



Sliding Door Panel In Pocket



Typical Intermediate Post



Typical Intermediate Post Meeting 'T' Intersection

A SPACE SOLUTION

House Door, Wardrobe (with Rolling Post).

Rumpus Room, Create a Spare Room. Conceal your Laundry.

Office Divider. Restaurant Divider.

Church. Servery. Schools, Clubs.

Energy Conservation. Maximise Space Usage.

SPECIFICATIONS (subject to change)

Finish	Pre finished in Synthetic Veneer (Melteca) or Natural Timber Veneer with two coats Satin Polyurethane. Spray painted	Pendant Pulls	On all doors over 2460mm high
Tracks and Closing Moulds	Aluminium Anodised Bronze or Powdercoated Arctic White. Number 12 Track (commercial use). Use with Sub-Channel for Suspended Ceilings.	Hanging Weight	12.25Kg p/m ² approximately.
Trolleys	25mm solid nylon wheels. For doors over 2460mm high and or 4500mm wide 25mm nylon tyred ball-bearing wheels.	Fixing	All necessary track and fixing screws etc. supplied.
Panels	MODEL 500 lead 19mm x 64mm, Intermediate 10mm x 129mm back 10mm x 52mm. MODEL 800 lead 19mm x 89mm back 10mm x 52mm	Work By Others	Timber jambs to be straight and plumb, timber head and floor to be straight and level.
Hinging	Flexible vinyl extrusion providing full height panel linkage, edge trim and panel face protection. Colours black, white, brown, fawn, cream, grey and coral.	Maximum Sizes	
Rolling Post	Same dimension as lead panel. Door latches and opens each end.	Melteca	MODEL 500 2440 High 4880 Wide (Double for pairs) MODEL 800 2440 High 9250 Wide (Double for pairs)
Intermediate Post	Same dimension as lead panel to accept Foot Bolt. Required for 6000mm wide plus, or as specified.	Timber Veneer	MODEL 500 2440 High 4880 Wide (Double for pairs) MODEL 800 2700 High 9250 Wide (Double for pairs)
Handles	Latch with handle and snib each side is standard. Locks and other combinations can be provided.	Stack Dimensions	MODEL 500 Stack Depth (S) = 108 per metre of opening +101 MODEL 800 Stack Depth (S) = 72 per metre of opening + 123
		Required Measurements	Full daylight opening. Use of our measure sheet or order sheet is recommended. Track installation option required.
		Special Finishes	Paint, Wallcovering, Vinyl's 2mm maximum thickness. Curved Tracks. Check with Trans Space.

woodfold foldingdoors

A superb, clean-lined space divider, the Woodfold is the most economical folding door in the Trans-Space range. Ideal for doorways and openings where a hinged, swinging door would take up too much space, Woodfold doors are also the perfect solution for creating temporary rooms or dividing large spaces.

The rolling-post Woodfold model opens at either end, allowing access to both sides of the space and making it suitable for wardrobe or laundry alcoves.

Woodfold doors can be custom made quickly to your required dimensions and finish. Options include Melteca, Melamine, timber veneer or your choice of paint colour.

Trans-Space Doors Ltd is a specialist in space management solutions. We design, manufacture and market operable walls and folding doors for residential, commercial, retail, educational, hospitality, leisure and conference projects.

All our walls and doors are customised to your usage, dimensions, privacy needs, material and finish preferences, fit-out and budget to provide maximum versatility, efficiency and space savings, as well as privacy and sound rating, should you require it.



TRANS-SPACE
OPERABLE WALLS - FOLDING DOORS

Trans-Space Doors Limited

12 Lovegrove Crescent, Otara, Auckland
PO Box 58 070 Greenmoun, Manukau 2141

Tel: 09 274 4089

Fax: 09 274 7058

www.trans-space.co.nz

ALL TRANS-SPACE PRODUCTS ARE COVERED BY A ONE YEAR WARRANTY
Manufacturer's conditions of sale and warranty are available on request.

